

General Motif Characteristics:

Top Similar Looking Motifs:

EGR1..3.p2	0.000
HCMC.EGR1_f2.wm	0.036
HOMER.EGR(Zf).K562-EGR1-ChIP-Seq	0.041
HTSELEX.EGR2.C2H2.DBD.monomeric.wm1	0.055
JASPAR.Egr1.wm	0.058
HCMC.EGR2_si.wm	0.062
HTSELEX.EGR1.C2H2.DBD.monomeric.wm1	0.063
HTSELEX.EGR2.C2H2.full.monomeric.wm1	0.069
HTSELEX.EGR3.C2H2.DBD.monomeric.wm1	0.081
UNIPROBE.Egr1_primary.wm	0.081

Statistics:

- Motif name: EGR1..3.p2
- Enrichment: 5.4100182649
- log-Likelihood Ratio: 842.437982026
- Area under precision recall curve: 0.6720

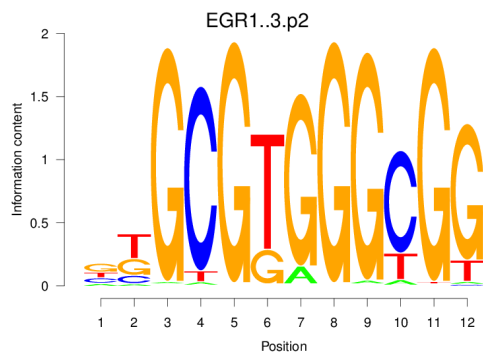


Figure 1: Logo of Weight Matrix

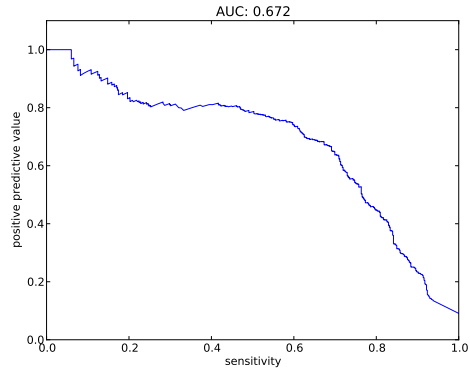


Figure 2: Precision and Recall curve

Statistics for TFBS - Peak Centering and Peak Posterior - Peak Height Correlation:

0.1

Overall statistics:

- Number of true peaks out of total number of peaks: 2072/2496
- 83.01 percent are true.
- Cut-off: minimum summed posterior of 0.20
- Peak plots contain TFBS of posterior ≥ 0.20

Statistic for centering of TFBSs at peak centers:

- Enrichment at binding sites: 2.6735

Correlation between peak Z-score and number of binding sites at peak: 0.1152

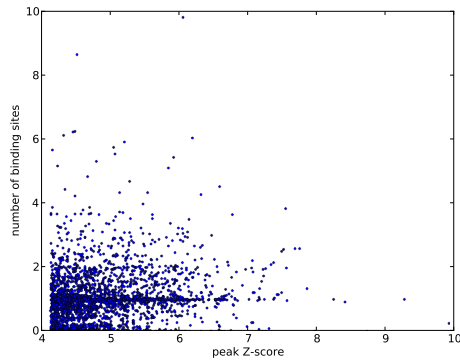


Figure 3: Scatter plot of peak Z-score versus number of binding sites at peak

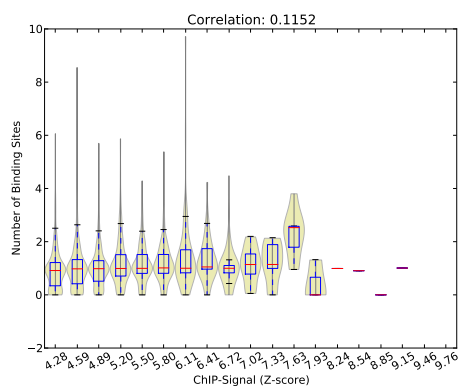


Figure 4: Violin plot of peak Z-score versus number of binding sites at peak

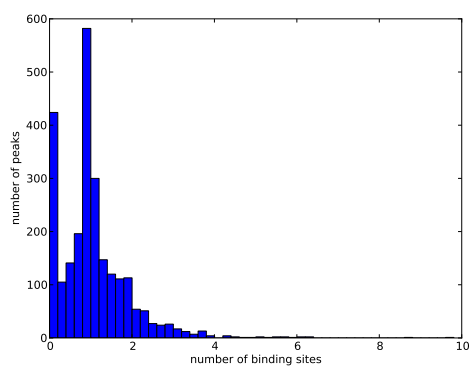


Figure 5: Histogram of number of binding sites at peaks

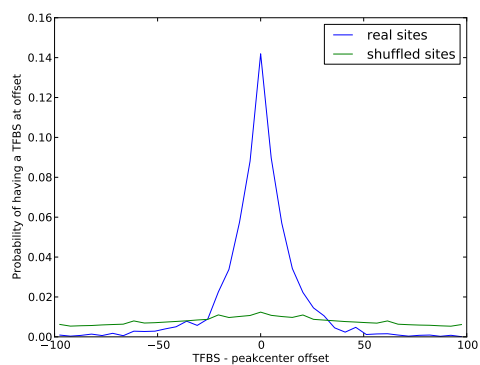


Figure 6: Histogram of distances of TFBS to its nearest peak center

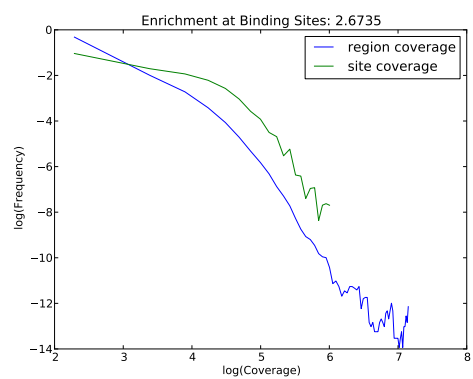


Figure 7: Histograms of coverage at sites and in total regions