

## General Motif Characteristics:

### Top Similar Looking Motifs:

HTSELEX.ELF4.ETS.full.monomeric.wm1	0.000
HTSELEX.ELF1.ETS.DBD.monomeric.wm1	0.002
HTSELEX.ELF1.ETS.full.monomeric.wm1	0.007
HTSELEX.EHF.ETS.full.monomeric.wm1	0.009
HTSELEX.ELF3.ETS.DBD.monomeric.wm1	0.010
HTSELEX.ELF3.ETS.full.monomeric.wm1	0.028
EHF.p2	0.056
HCMC.EHF_si.wm	0.062
HTSELEX.ELF5.ETS.DBD.monomeric.wm1	0.064
HTSELEX.ELF5.ETS.full.monomeric.wm1	0.076

### Statistics:

- Motif name: HTSELEX.ELF4.ETS.full.monomeric.wm1
- Enrichment: 14.9314741264
- log-Likelihood Ratio: 1351.73567127
- Area under precision recall curve: 0.8151

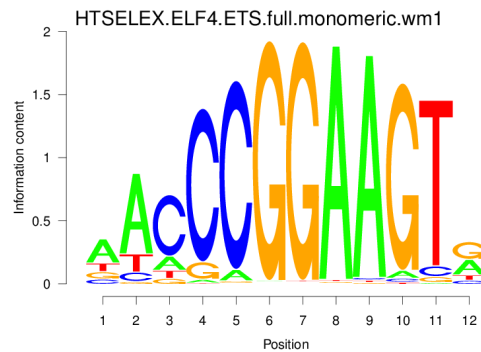


Figure 1: Logo of Weight Matrix

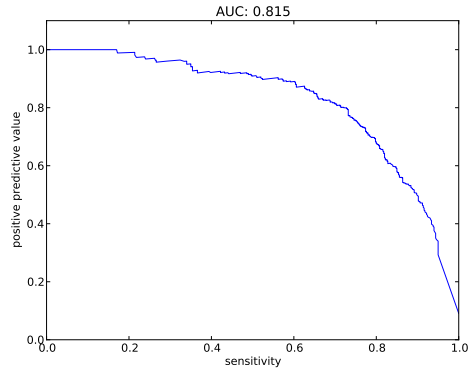


Figure 2: Precision and Recall curve

## Statistics for TFBS - Peak Centering and Peak Posterior - Peak Height Correlation:

### 0.1

Overall statistics:

- Number of true peaks out of total number of peaks: 2579/5984
- 43.10 percent are true.
- Cut-off: minimum summed posterior of 0.20
- Peak plots contain TFBS of posterior  $\geq 0.20$

Statistic for centering of TFBSs at peak centers:

- Enrichment at binding sites: 3.9467

Correlation between peak Z-score and number of binding sites at peak: 0.3645

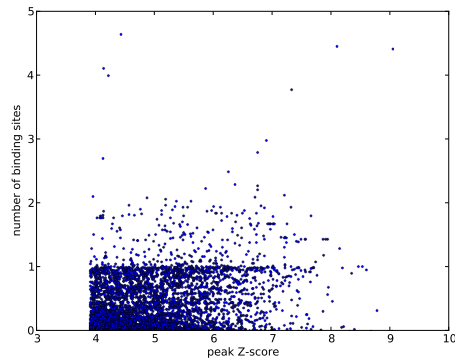


Figure 3: Scatter plot of peak Z-score versus number of binding sites at peak

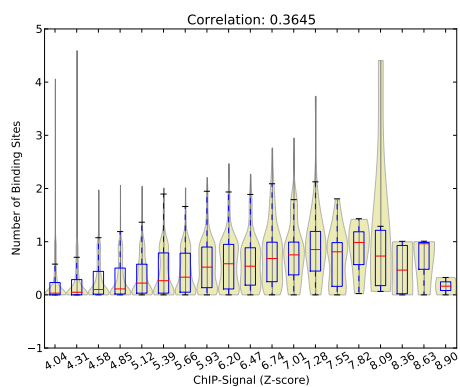


Figure 4: Violin plot of peak Z-score versus number of binding sites at peak

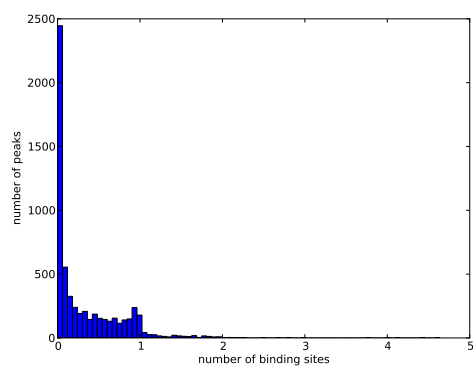


Figure 5: Histogram of number of binding sites at peaks

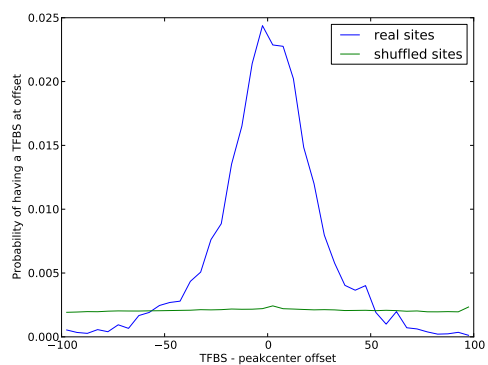


Figure 6: Histogram of distances of TFBS to its nearest peak center

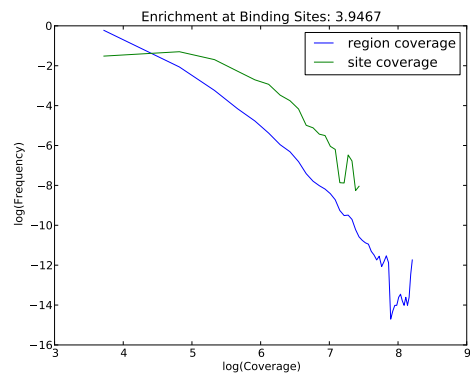


Figure 7: Histograms of coverage at sites and in total regions