

General Motif Characteristics:

Top Similar Looking Motifs:

HCMC.NFYA_f1.wm	0.028
HCMC.NFYB_f1.wm	0.029
HCMC.CEBPZ_si.wm	0.058
HCMC.FOXI1_f1.wm	0.062
ENCODE.NFY	0.063
HCMC.NFYC_f1.wm	0.069
JASPAR.NFYA.wm	0.079
HCMC.FOS_si.wm	0.090
HCMC.PBX3_f2.wm	0.090
HCMC.YBOX1_f2.wm	0.139

Statistics:

- Motif name: denovo_WM_22
- Enrichment: 14.8370200943
- log-Likelihood Ratio: 1348.56270765
- Area under precision recall curve: 0.8901

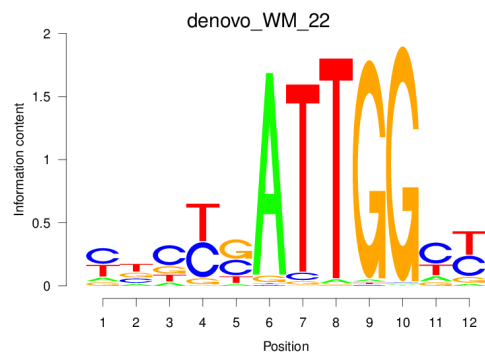


Figure 1: Logo of Weight Matrix

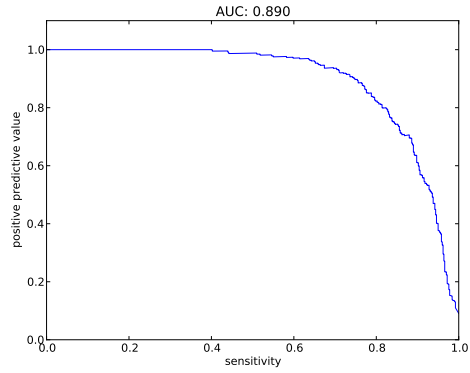


Figure 2: Precision and Recall curve

Statistics for TFBS - Peak Centering and Peak Posterior - Peak Height Correlation:

0.1

Overall statistics:

- Number of true peaks out of total number of peaks: 1242/1464
- 84.84 percent are true.
- Cut-off: minimum summed posterior of 0.20
- Peak plots contain TFBS of posterior ≥ 0.20

Statistic for centering of TFBSs at peak centers:

- Enrichment at binding sites: 3.2307

Correlation between peak Z-score and number of binding sites at peak: 0.3473

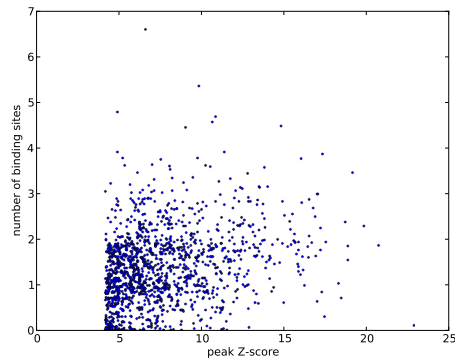


Figure 3: Scatter plot of peak Z-score versus number of binding sites at peak

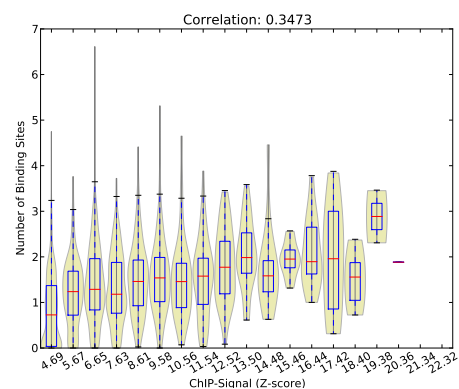


Figure 4: Violin plot of peak Z-score versus number of binding sites at peak

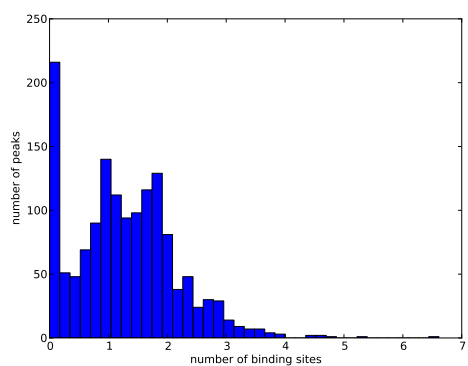


Figure 5: Histogram of number of binding sites at peaks

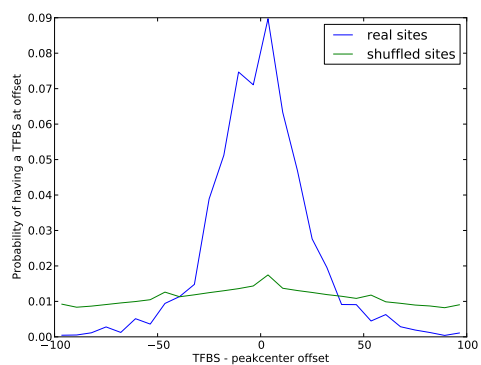


Figure 6: Histogram of distances of TFBS to its nearest peak center

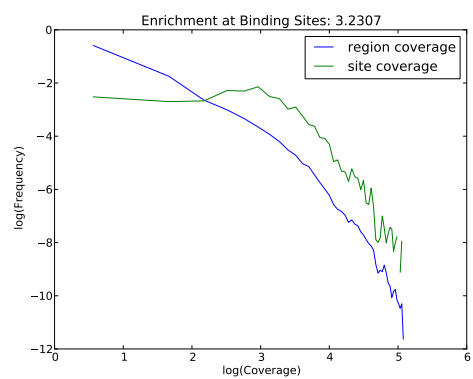


Figure 7: Histograms of coverage at sites and in total regions