

## General Motif Characteristics:

### Top Similar Looking Motifs:

HCMC.NFYB_f1.wm	0.000
HCMC.NFYA_f1.wm	0.003
HCMC.NFYC_f1.wm	0.036
ENCODE.NFY	0.040
JASPAR.NFYA.wm	0.054
HCMC.PBX3_f2.wm	0.058
HCMC.FOXI1_f1.wm	0.058
HCMC.CEBPZ_si.wm	0.059
HCMC.FOS_si.wm	0.099
HCMC.YBOX1_f2.wm	0.159

### Statistics:

- Motif name: HCMC.NFYB\_f1.wm
- Enrichment: 19.9025974368
- log-Likelihood Ratio: 1495.42512384
- Area under precision recall curve: 0.8668

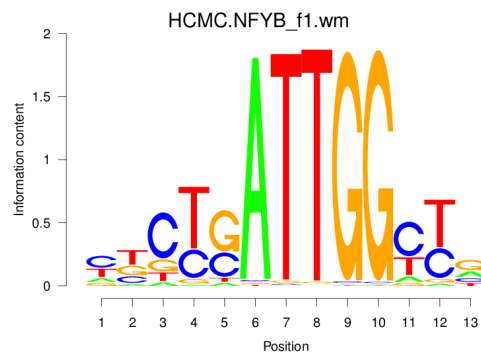


Figure 1: Logo of Weight Matrix

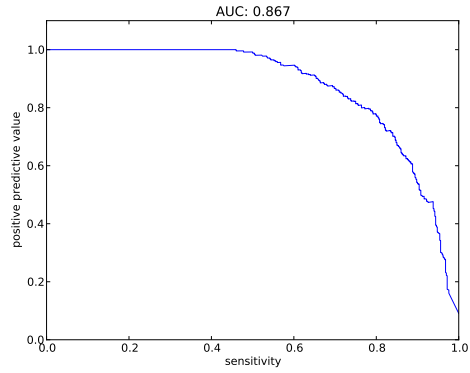


Figure 2: Precision and Recall curve

## Statistics for TFBS - Peak Centering and Peak Posterior - Peak Height Correlation:

### 0.1

Overall statistics:

- Number of true peaks out of total number of peaks: 1158/1464
- 79.10 percent are true.
- Cut-off: minimum summed posterior of 0.20
- Peak plots contain TFBS of posterior  $\geq 0.20$

Statistic for centering of TFBSs at peak centers:

- Enrichment at binding sites: 3.2635

Correlation between peak Z-score and number of binding sites at peak: 0.281

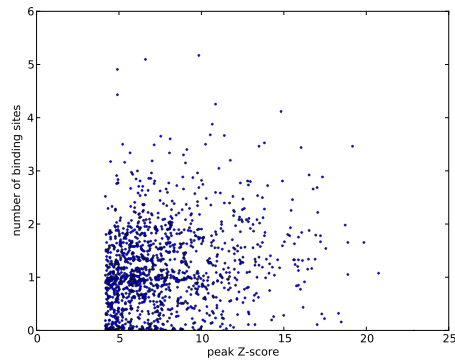


Figure 3: Scatter plot of peak Z-score versus number of binding sites at peak

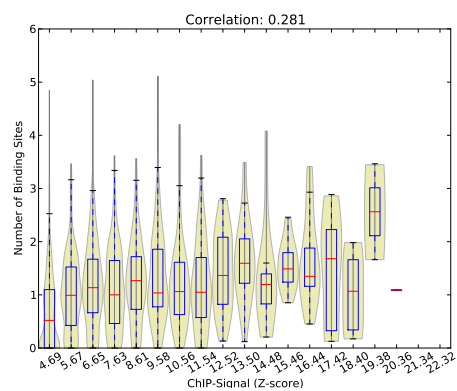


Figure 4: Violin plot of peak Z-score versus number of binding sites at peak

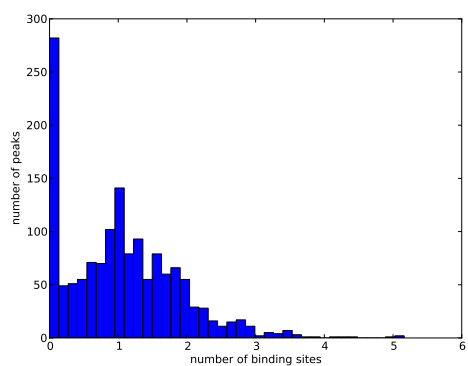


Figure 5: Histogram of number of binding sites at peaks

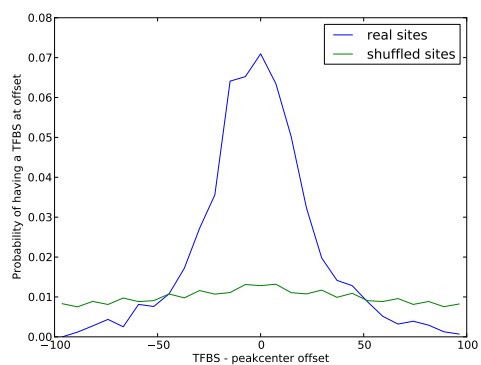


Figure 6: Histogram of distances of TFBS to its nearest peak center

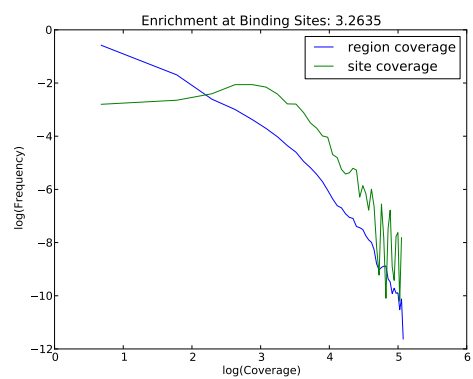


Figure 7: Histograms of coverage at sites and in total regions