

General Motif Characteristics:

Top Similar Looking Motifs:

JASPAR.NFYA.wm	0.000	
ENCODE.NFY	0.026	
HCMC.NFYA_f1.wm	0.050	
HCMC.NFYB_f1.wm	0.054	
HCMC.NFYC_f1.wm	0.056	
HCMC.PBX3_f2.wm	0.077	
HCMC.FOXI1_f1.wm	0.113	
HCMC.CEBPZ_si.wm	0.114	
HCMC.FOS_si.wm	0.147	
UNIPROBE.Barhl1_2590.2.wm	0.176	

Statistics:

- Motif name: JASPAR.NFYA.wm
- Enrichment: 16.7699392541
- log-Likelihood Ratio: 1409.79397677
- Area under precision recall curve: 0.8742

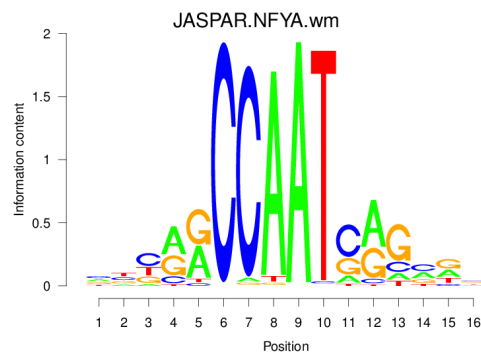


Figure 1: Logo of Weight Matrix

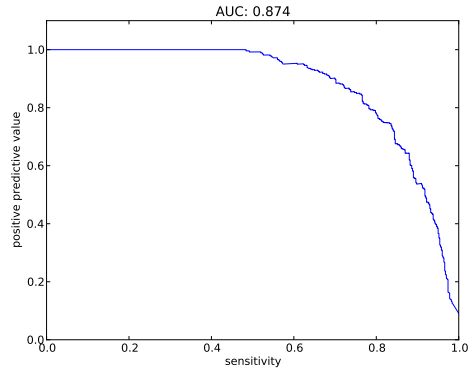


Figure 2: Precision and Recall curve

Statistics for TFBS - Peak Centering and Peak Posterior - Peak Height Correlation:

0.1

Overall statistics:

- Number of true peaks out of total number of peaks: 1198/1464
- 81.83 percent are true.
- Cut-off: minimum summed posterior of 0.20
- Peak plots contain TFBS of posterior ≥ 0.20

Statistic for centering of TFBSs at peak centers:

- Enrichment at binding sites: 3.2463

Correlation between peak Z-score and number of binding sites at peak: 0.2814

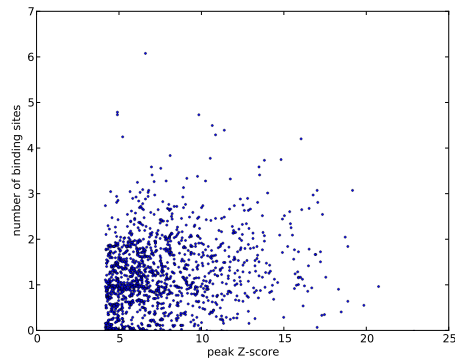


Figure 3: Scatter plot of peak Z-score versus number of binding sites at peak

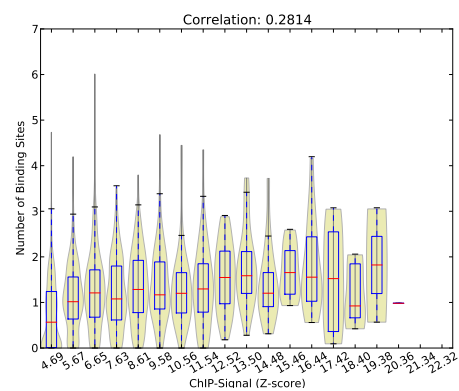


Figure 4: Violin plot of peak Z-score versus number of binding sites at peak

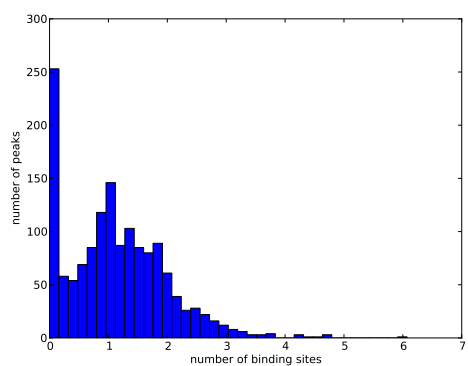


Figure 5: Histogram of number of binding sites at peaks

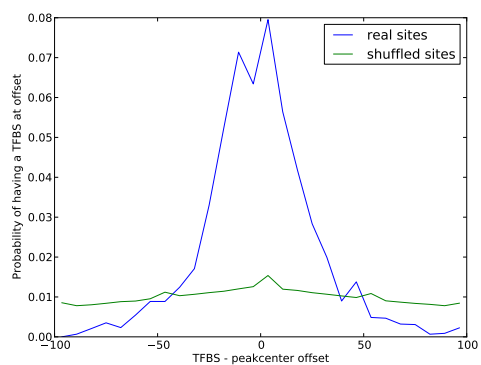


Figure 6: Histogram of distances of TFBS to its nearest peak center

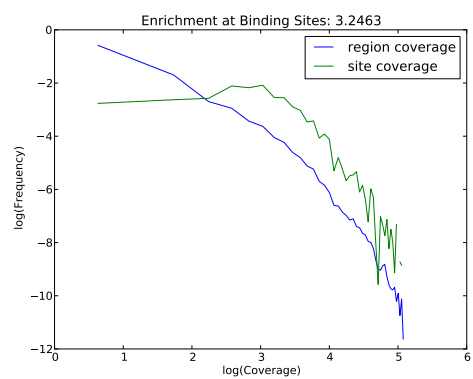


Figure 7: Histograms of coverage at sites and in total regions