

General Motif Characteristics:

Top Similar Looking Motifs:

HTSELEX.RFX4.RFX.DBD.dimeric.wm1	0.000
HTSELEX.RFX3.RFX.DBD.dimeric.wm1	0.009
HTSELEX.Rfx2.RFX.DBD.dimeric.wm1	0.011
HTSELEX.RFX2.RFX.DBD.dimeric.wm1	0.019
HTSELEX.Rfx3.RFX.DBD.dimeric.wm1	0.034
HTSELEX.RFX5.RFX.DBD.dimeric.wm1	0.034
HTSELEX.RFX5.RFX.DBD.dimeric.wm2	0.041
HTSELEX.RFX5.RFX.DBD.dimeric.wm3	0.041
RFX1..5_RFXANK_RFXAP.p2	0.073
HCMC.RFX3_f1.wm	0.092

Statistics:

- Motif name: HTSELEX.RFX4.RFX.DBD.dimeric.wm1
- Enrichment: 1.8411441201
- log-Likelihood Ratio: 305.19359139
- Area under precision recall curve: 0.2844

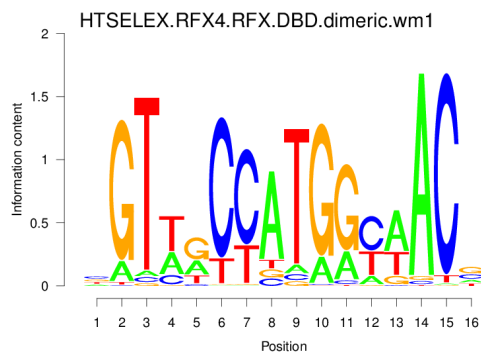


Figure 1: Logo of Weight Matrix

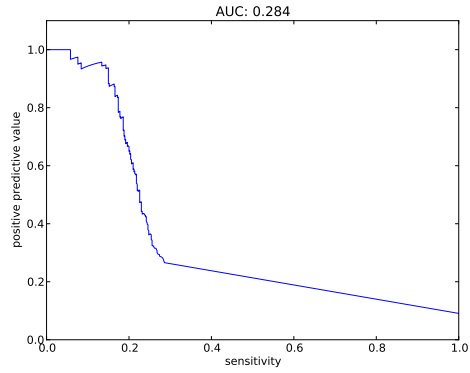


Figure 2: Precision and Recall curve

Statistics for TFBS - Peak Centering and Peak Posterior - Peak Height Correlation:

0.1

Overall statistics:

- Number of true peaks out of total number of peaks: 1116/31851
- 3.50 percent are true.
- Cut-off: minimum summed posterior of 0.20
- Peak plots contain TFBS of posterior ≥ 0.20

Statistic for centering of TFBSs at peak centers:

- Enrichment at binding sites: 3.3096

Correlation between peak Z-score and number of binding sites at peak: 0.1505

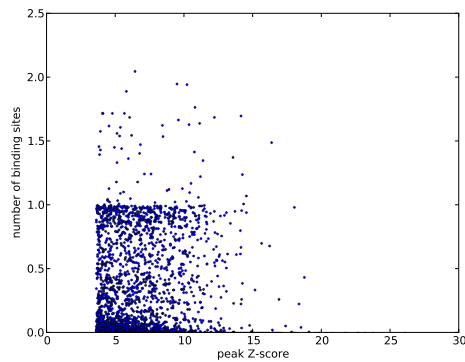


Figure 3: Scatter plot of peak Z-score versus number of binding sites at peak

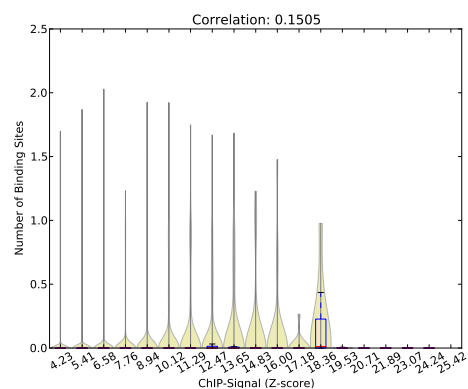


Figure 4: Violin plot of peak Z-score versus number of binding sites at peak

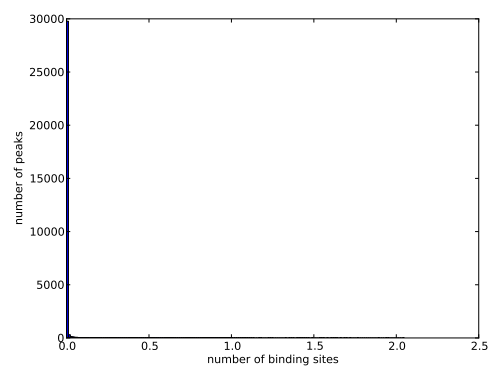


Figure 5: Histogram of number of binding sites at peaks

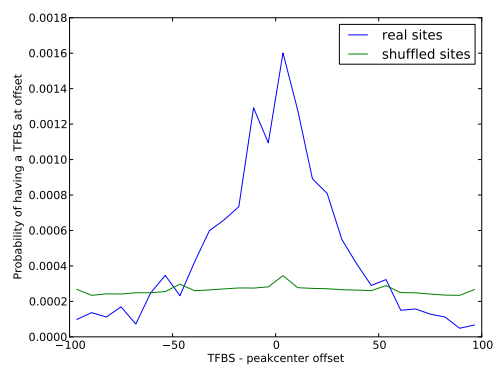


Figure 6: Histogram of distances of TFBS to its nearest peak center

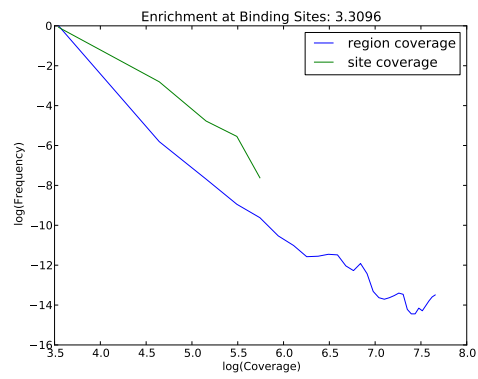


Figure 7: Histograms of coverage at sites and in total regions