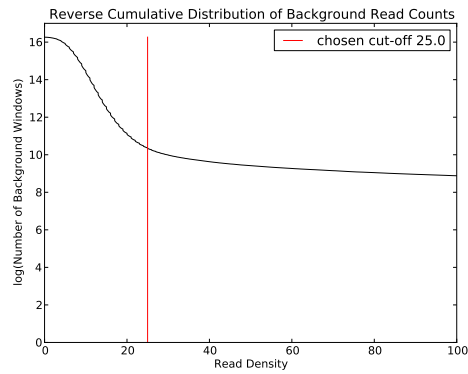


Filtering of Background Read Counts:

0.1

Used BG cut-off: 25

31731 of 11580051 input windows were filtered out (0.274014337243 percent).



Fitting Background Noise Distribution:

0.2

Fitted parameters:

—sigma: 0.126306723595495

—rho: 0.0148169372502421

—mu: -0.0709100186277772

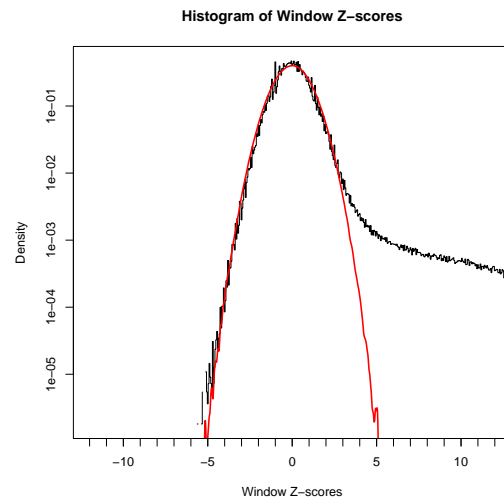


Figure 1: Distribution of Window Z-values with Fitted Gaussian.

Determining Z-value Cut-off and Mergeing Windows:

Bin Reads Log

Z value cut-off: 3.37

Number of windows above Z value cut-off: 98656

Number of regions above Z value cut-off: 47180

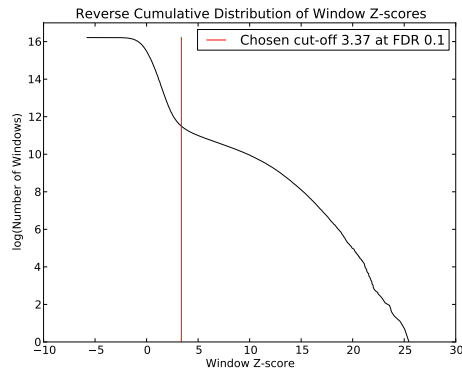


Figure 2: Reverse Cumulative Distribution of Window Z-values.

Refining Peaks (Gaussian Mixture Modelling):

0.3

About 47200 input regions.

Found mean fragment length 108.0. Constrained sigma to 33.212–90.212

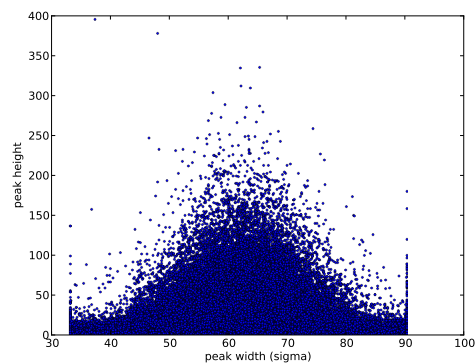


Figure 3: Scatter plot of peak height versus peak width

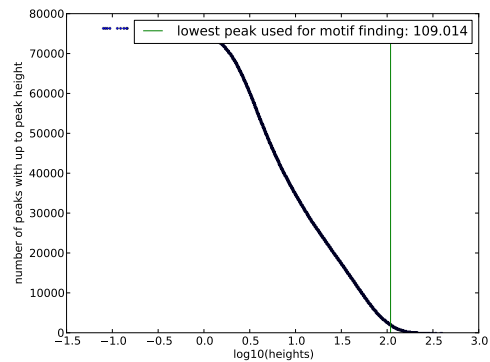


Figure 4: Reverse cumulative distribution of peak heights

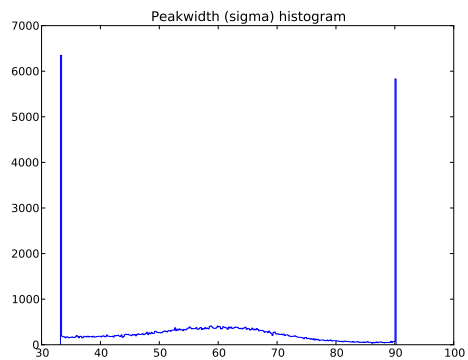


Figure 5: Histogram of peak widths (sigmas)

Computing Z-scores of Refined Peaks:

0.4

Total number of peaks: 76205

Number of peaks above Z-score of 3.37: 44017

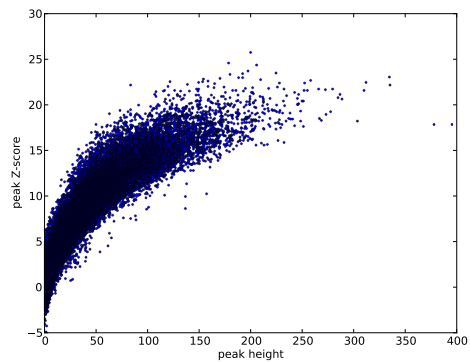


Figure 6: Scatter plot of peak height versus peak Z-score

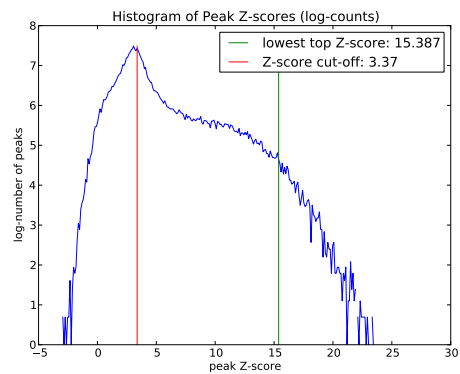


Figure 7: Histogram of peak Z-scores

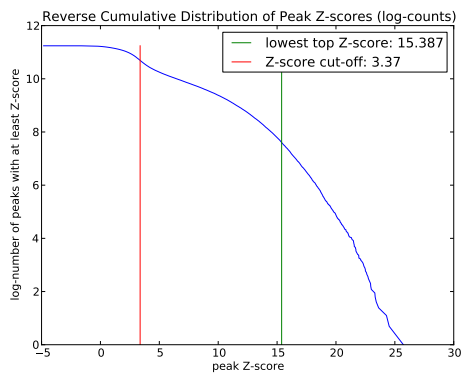


Figure 8: Reverse cumulative of peak Z-scores

Annotating Refined Peaks:

0.5

308 peaks were not annotated out of 44017 peaks.