

General Motif Characteristics:

Top Similar Looking Motifs:

HCMC.IRF4_si.wm	0.000	
ENCODE.PU1	0.097	
HCMC.SPI1_si.wm	0.104	
HCMC.IRF3_f1.wm	0.163	
HCMC.IRF8_si.wm	0.171	
HCMC.STAT2_f1.wm	0.195	
UNIPROBE.Sfpil.wm	0.210	
HCMC.IRF1_si.wm	0.215	
HTSELEX.IRF3.IRF.full.trimeric.wm1	0.223	
UNIPROBE.Sfpil_primary.wm	0.224	

Statistics:

- Motif name: HCMC.IRF4_si.wm
- Enrichment: 3.82129044365
- log-Likelihood Ratio: 670.294089024
- Area under precision recall curve: 0.5796

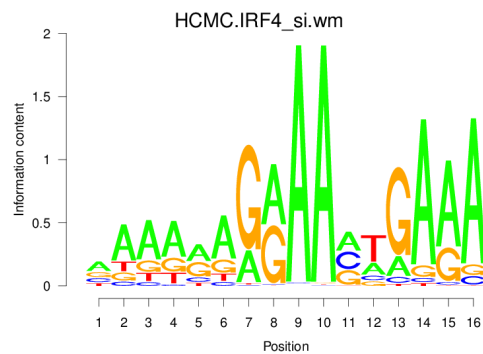


Figure 1: Logo of Weight Matrix

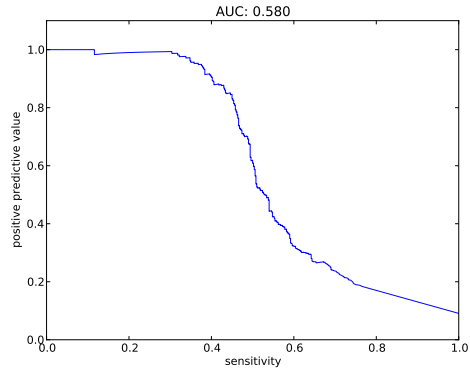


Figure 2: Precision and Recall curve

Statistics for TFBS - Peak Centering and Peak Posterior - Peak Height Correlation:

0.1

Overall statistics:

- Number of true peaks out of total number of peaks: 15127/18267
- 82.81 percent are true.
- Cut-off: minimum summed posterior of 0.20
- Peak plots contain TFBS of posterior ≥ 0.20

Statistic for centering of TFBSs at peak centers:

- Enrichment at binding sites: 1.9029

Correlation between peak Z-score and number of binding sites at peak: 0.1697

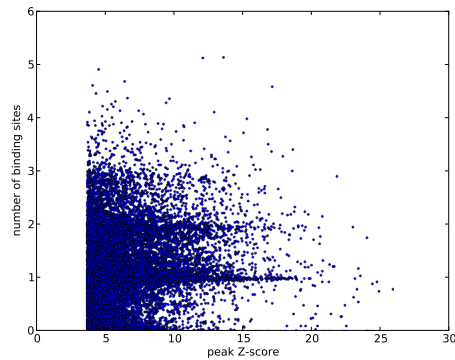


Figure 3: Scatter plot of peak Z-score versus number of binding sites at peak

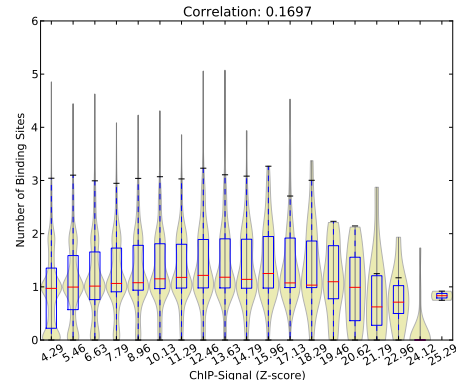


Figure 4: Violin plot of peak Z-score versus number of binding sites at peak

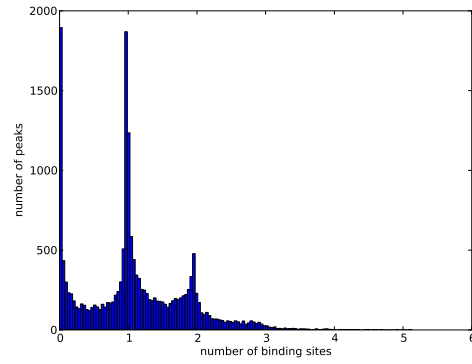


Figure 5: Histogram of number of binding sites at peaks

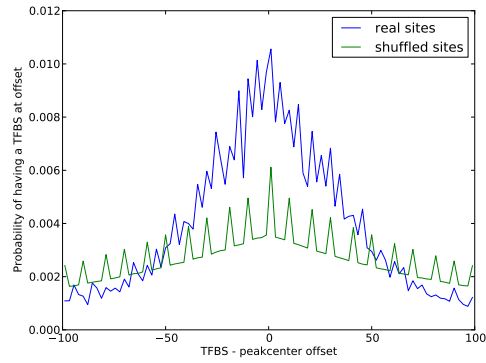


Figure 6: Histogram of distances of TFBS to its nearest peak center

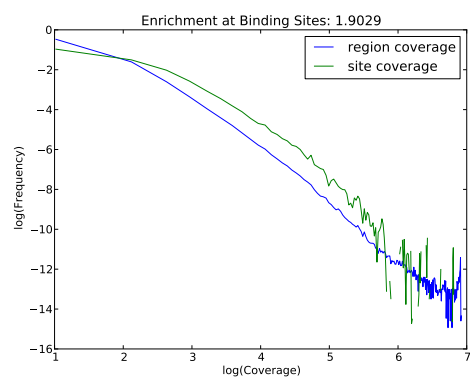


Figure 7: Histograms of coverage at sites and in total regions